

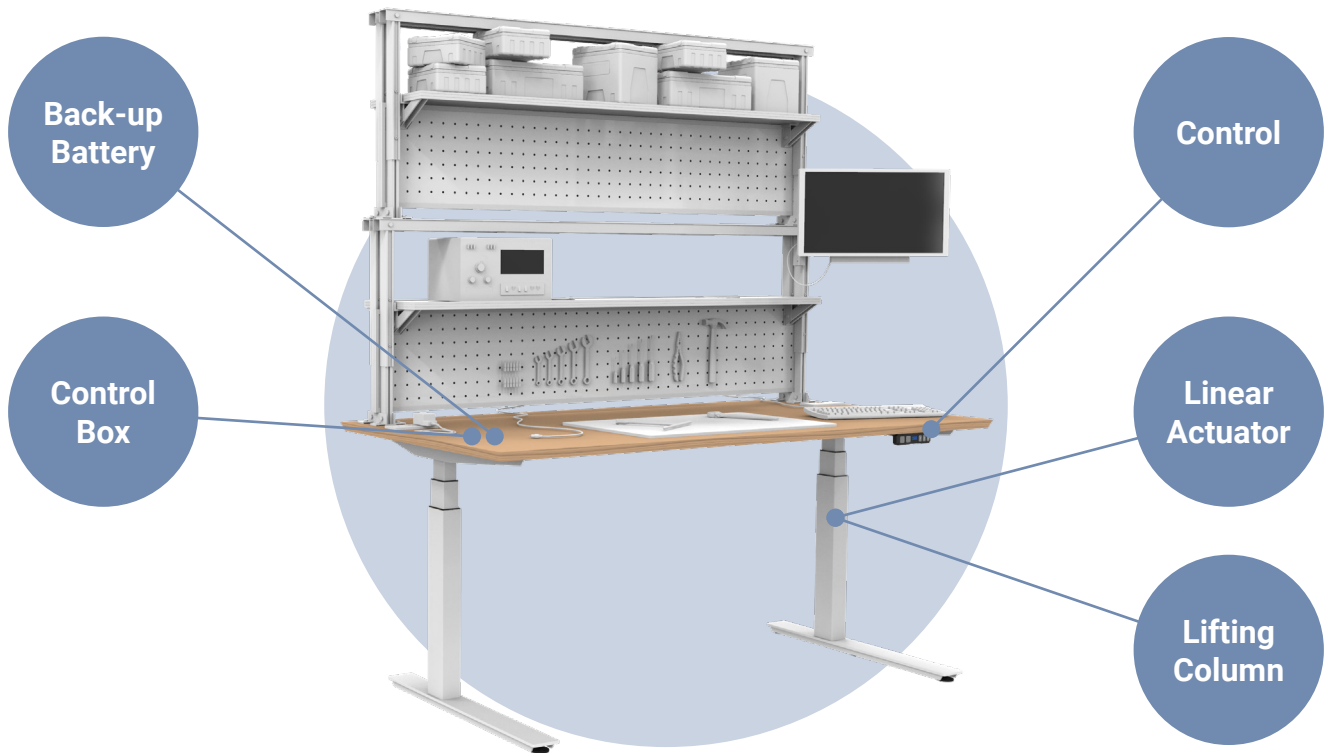
ACTUATION SYSTEMS FOR INDUSTRIAL WORKSTATIONS

www.timotion.com

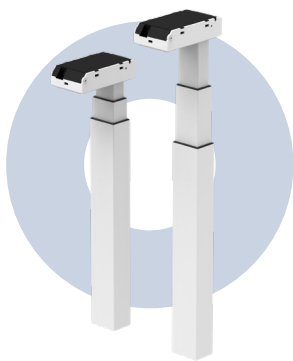


Industrial Workstation Solutions

Our electric motion systems for industrial workstations enable ergonomic height adjustment, preventing musculoskeletal disorders and allowing users to adopt a comfortable posture for improved motivation and productivity.



Heavy Duty Lifting Columns



TL10H

Max. push load:
1,200N
Speed at max. load:
19mm/s
Speed at no load:
23mm/s
Outer tube profile:
80 x 60mm
Stroke / Retracted length:
650mm / 590mm



TL12H

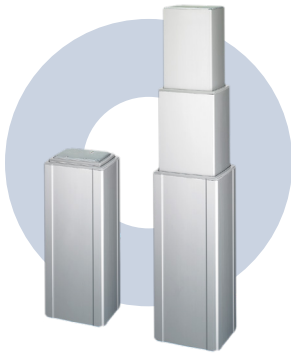
Max. push load:
1,200N
Speed at max. load:
19mm/s
Speed at no load:
23mm/s
Outer tube profile:
80 x 60mm
Stroke / Retracted length:
650mm / 590mm



TL15H

Max. push load:
1,200N
Speed at max. load:
22mm/s
Speed at no load:
28mm/s
Outer tube profile:
80 x 60mm
Stroke / Retracted length:
500mm / 645mm

Heavy Duty Lifting Columns



TL3

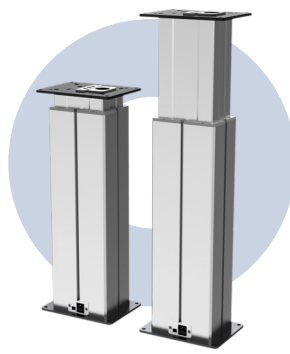
Max. push load:
4,000N / 2,000N

Speed at max. load:
13.7mm/s / 20mm/s

Speed at no load:
28mm/s / 35mm/s

Stroke:
250~1,200mm

Minimum retracted length:
 $\geq \text{Stroke}/2 + 150\text{mm}$



TL18AC

Max. push load:
4,500N / 3,000N / 2,000N

Speed at max. load:
6.6mm/s / 9.5mm/s / 13.1mm/s

Speed at no load:
11.4mm/s / 17.1mm/s / 22.9mm/s

Stroke:
20~700mm

Minimum retracted length:
 $\geq \text{Stroke} + 183\text{mm}$



Integrated
AC output
and Ethernet socket

Actuators for Lifting Column



TA4

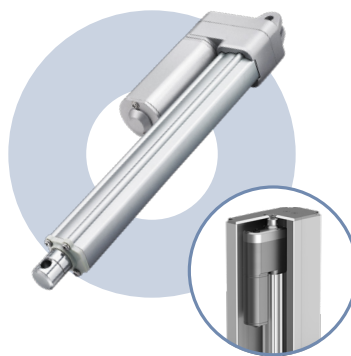
Max. push load:
3,500N / 2,500N / 1,500N

Speed at max. load:
3.1mm/s / 5.1mm/s / 12.5mm/s

Speed at no load:
6.2mm/s / 9.3mm/s / 26mm/s

Stroke:
20~600mm

Minimum retracted length:
 $\geq \text{Stroke} + 140\text{mm}$



TA16

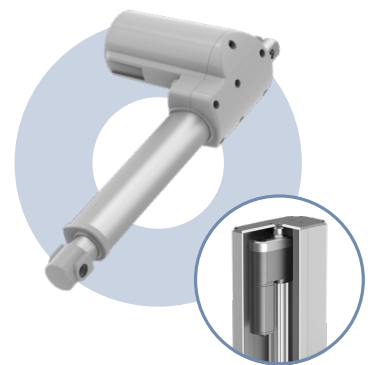
Max. push load:
3,500N / 2,000N / 1,500N

Speed at max. load:
6.2mm/s / 10.5mm/s / 13.5mm/s

Speed at no load:
11mm/s / 17mm/s / 23.5mm/s

Stroke:
20~600mm

Minimum retracted length:
 $\geq \text{Stroke} + 112\text{mm}$



TA23

Max. push load:
10,000N / 5,000N / 2,500N

Speed at max. load:
3.2mm/s / 6.6mm/s / 13.4mm/s

Speed at no load:
5.7mm/s / 11.3mm/s / 23mm/s

Stroke:
25~1,000mm

Minimum retracted length:
 $\geq \text{Stroke} + 163\text{mm}$

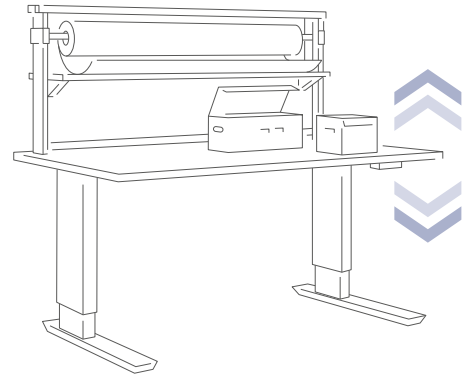
Sturdy and Ergonomic Hand Control



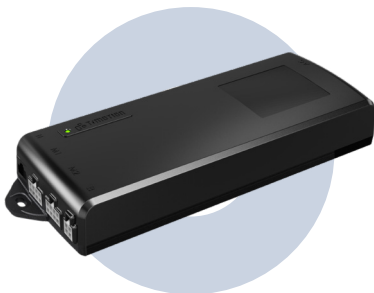
TDH27P

Specially designed for height adjustable mechanisms in industrial worksites

- Sturdy outer case
- Large-sized buttons with embossing
- 25KV ESD protection
- Supports two preset heights
- IP66

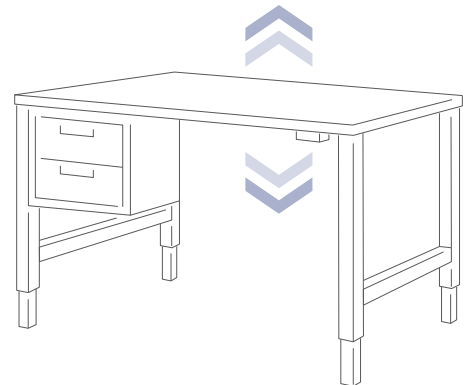


Control Box for Motor Synchronization



TC15P

- Number of motors: 2
- 0.1W standby power
- Bluetooth for App control
- Compatible with external battery

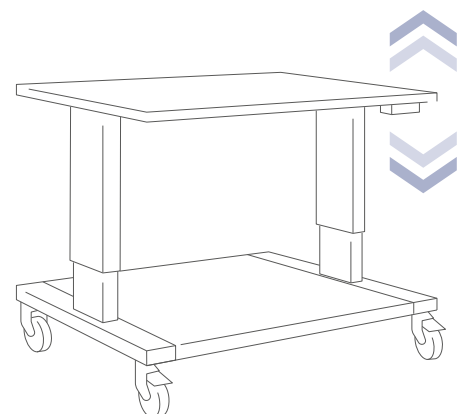


External Battery for Mobility



TBB9

- Battery type: Lithium
- Capacity: 2.5Ah/63Wh
- Discharging voltage: 25.2V DC

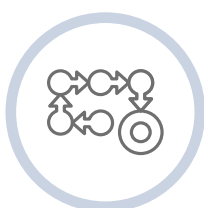
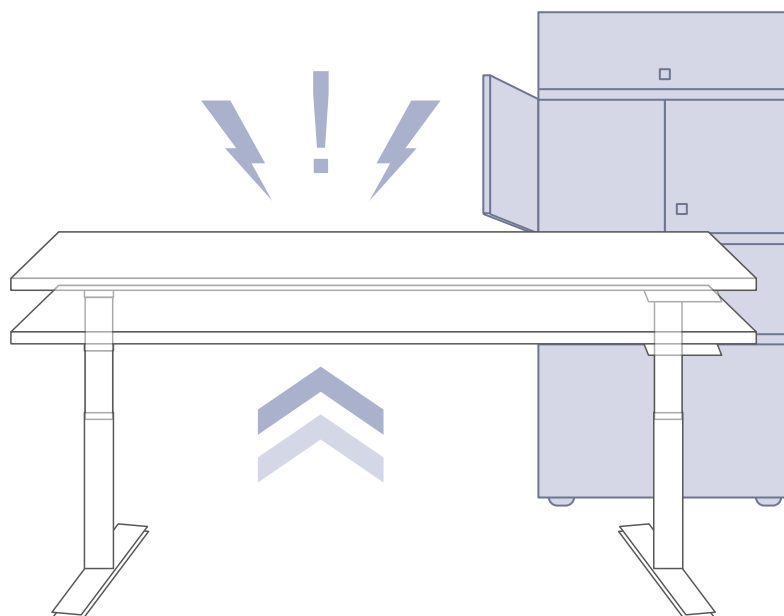
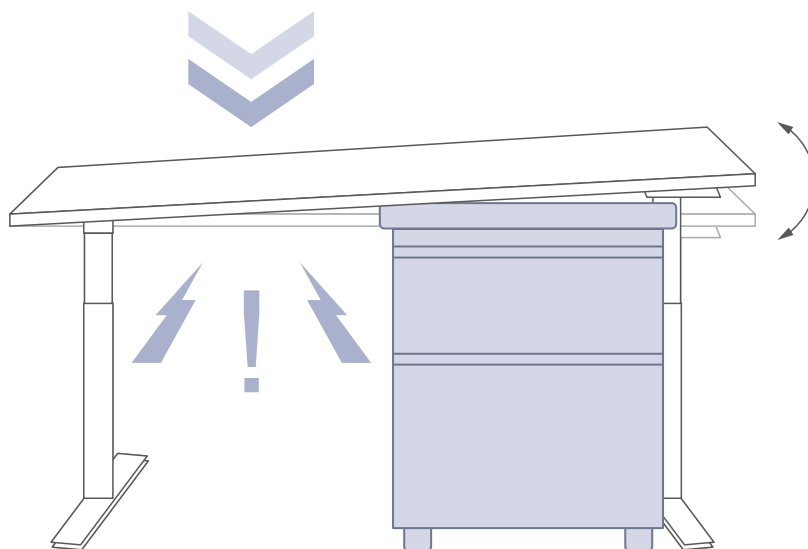


t-touch Anti-Collision Sensor

Sensor-based technology helps minimize the risk of damages if the workstation collides with obstacles during movement.

Check here :

[Greatest Anti-collision Solution for Height Adjustable Application](#)



Vertical Integration



Customization



Local Service



Europe Presence

TiMOTION Europe has a well-developed sales organization. Therefore, we can assist you locally. For more information, please visit our website.

TiMOTION Europe Subsidiary in France

+33 (0)1 74 82 50 51
sales.eu@timotion.com

Sales Office Russia

+7 (921) 406 23 34
sales.cis@timotion.com

Sales Office Germany

+49 2241 1487905
sales.eu@timotion.com

Sales Office Spain

+34 925 15 95 45
sales.eu@timotion.com

Sales Office Italy

+39 0362288456
sales.eu@timotion.com

Sales Office United Kingdom

sales.eu@timotion.com

